

DRILL PIPE & CASING TONGS

Drill Pipe Tongs are the latest addition to the product line of Access Oil Tools and are manufactured at its 42,000 sq. ft. plant located in Broussard, Louisiana

Access was founded in 1985 by professionals with years of experience in oil field sales and manufacturing. We recognized the need for a reliable source of quality equipment to meet the rigorous demands of this industry. Our company has grown steadily over the years and today is a leading supplier of pipe handling equipment to the drilling industry worldwide.

- Licensed under API Spec. Q1, 7K, 8A and 8C
- ISO 9001; 2000 Certified
- All Tongs Pull Tested and Full Certification Available

In addition to the Drill Pipe Tongs detailed in this catalog, Access offers a complete range of manual and proprietary powered handling tools. Manual tools include Elevators, Slips, Safety Clamps, Spiders, Bushings, Casing Scrapers and Stabbing Guides.

The powered tools cover Kelly Spinners, Rotating Mousehole Tool, The "Twister Torque" wrenching tool and the "Twister Spin" which incorporates the Twister Torque tool and a Drill Pipe Spinner.

This detailed parts catalog can be found on the Access web page and can be downloaded in PDF file format.

Web address: www.accessoiltools.com

TORQUE RATINGS

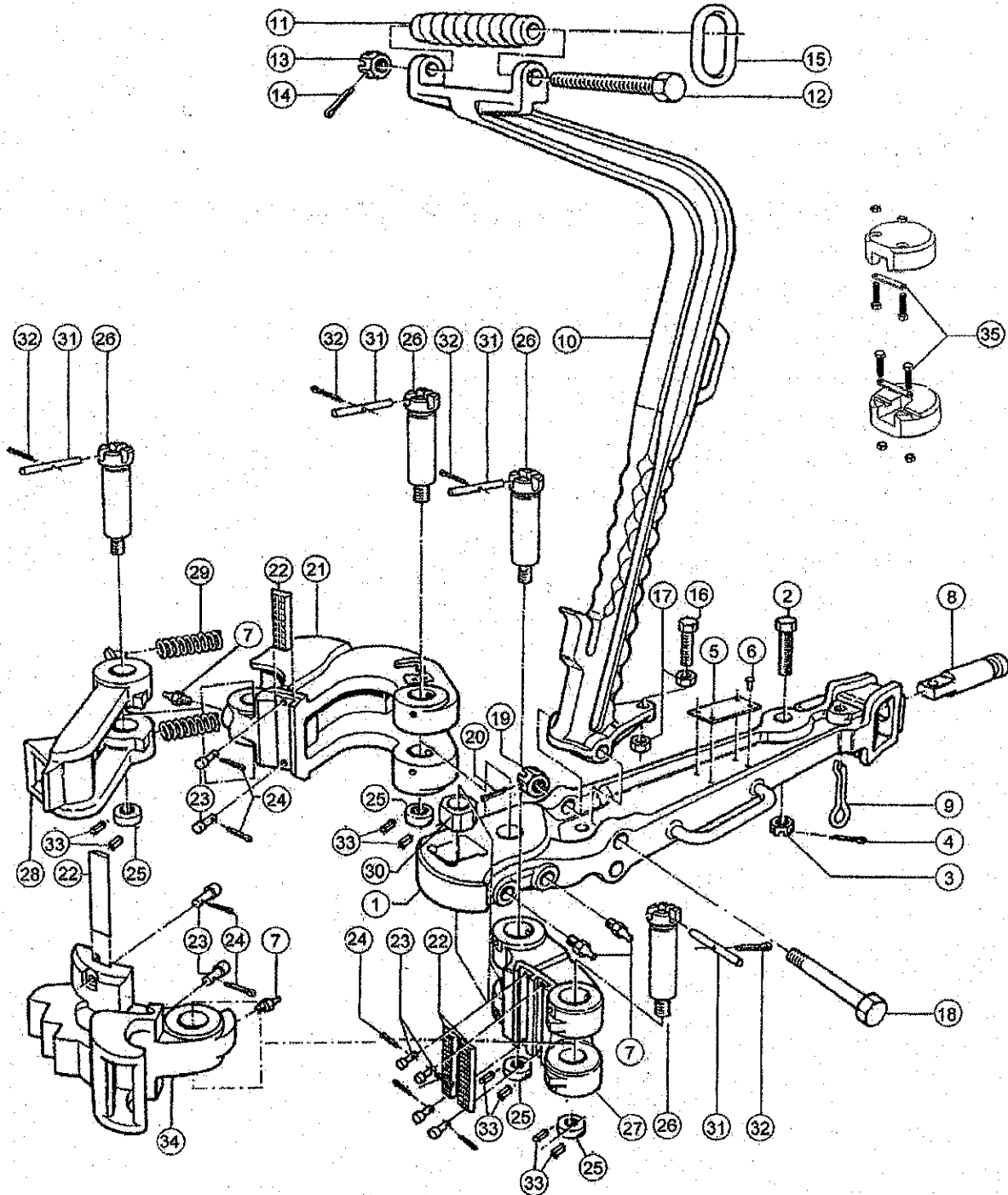
TYPE	TORQUE RATING (ft.lbs.)	SIZE RANGE
C	35,000	2 3/8" - 10 3/4"
B	30,000	13 3/8"
	40,000	9" - 11 3/4"
	55,000	3 1/2" - 9"
B Extended Head (for Casing)	25,000	13 3/8" - 25 1/2"
HT-65	40,000	11 3/4" - 17"
	65,000	3 1/2" - 11 1/4"
HT-100	60,000	16" - 17"
	75,000	12" - 15"
	100,000	4" - 12" and 15 3/4"



AOT TYPE "C" TONG COMPLETE

AOT #	DESCRIPTION	WT.
T30117-2	TYPE "C" TONG COMPLETE W/STANDARD LEVER LESS LUG JAWS (2 3/8" - 7")	250.00
T30117-3	TYPE "C" TONG COMPLETE W/SHORT LEVER LESS LUG JAWS (2 3/8" - 7")	232.00
T30117	TYPE "C" TONG COMPLETE W/STANDARD LEVER LESS LUG JAWS (7 5/8" - 10 3/4")	250.00
T30117-1	TYPE "C" TONG COMPLETE W/SHORT LEVER LESS LUG JAWS (7 5/8" - 10 3/4")	232.00

NOTE: ADD - ST TO END OF TONG P/N FOR TONG WITH SAFETY HANDLES & SET-BACK HANGER



HINGE AND LUG JAW ASSEMBLIES FOR TYPE "C" TONG

AOT #	ITEM#	DESCRIPTION	TORQUE RATING	WT.
T30728-1	34	2 3/8 — 3.668 LUG JAW ASSEMBLY	35,000 ft. lbs.	33.00
T30727-1	34	2 7/8 — 4 1/4 LUG JAW ASSEMBLY	35,000 ft. lbs.	34.00
T11939-4	34	3 1/2 — 5 1/4 LUG JAW ASSEMBLY	35,000 ft. lbs.	37.00
T11940-2	34	5 1/4 — 7 LUG JAW ASSEMBLY	35,000 ft. lbs.	49.00
T11941-1	N/P	7" — 8 5/8" HINGE & LUG JAW ASSEMBLY	35,000 ft. lbs.	61.00
T11941-2	N/P	7 — 8 5/8 LUG JAW	35,000 ft. lbs.	30.00
T11942-1	N/P	7" — 8 5/8" HINGE JAW ASSEMBLY (ONLY)	35,000 ft. lbs.	28.00
T13799-1	N/P	9 5/8 — 10 3/4 HINGE & LUG JAW ASSEMBLY	35,000 ft. lbs.	76.00
T13799	N/P	9 5/8 — 10 3/4 LUG JAW	35,000 ft. lbs.	39.00
T13798-1	N/P	9 5/8 — 10 3/4 HINGE JAW ASSEMBLY (ONLY)	35,000 ft. lbs.	36.00

NOTE: ADD - SH TO END OF LUG JAW P/N FOR JAWS W/SAFETY HANDLES

*Lug Jaw Assemblies include Jaw, and any required Tong Dies, Die Retainer Pins, Cotter Pins, & Grease Fittings

REPLACEMENT PARTS FOR TYPE "C" TONG

AOT #	ITEM #	DESCRIPTION	** SPARES	# REQ.	WT.
T11516-2	1-7	STANDARD LEVER ASSY. F/TYPE C TONG		1	87.00
T11516	1	STANDARD LEVER ONLY F/TYPE C TONG		1	78.00
T11883-1	1-7	SHORT LEVER ASSY. F/TYPE C TONG		1	63.00
T11883	1	SHORT LEVER ONLY F/TYPE C TONG		1	54.00
T939099-108	2	SAFETY LINE BOLT	1	1	1.00
T50516-C	3	SAFETY LINE BOLT NUT	1	1	.25
T51402-14	4	COTTER PIN	2	1	.10
T26119-1	5	NAME PLATE		1	.10
T53301-4-3	6	NAME PLATE SCREWS		4	.05
T53201	7	GREASE FITTING		2	.05
T11517	8	TONG LINE PIN F/TYPE C TONG	1	1	4.00
T25468	9	TONG LINE PIN RETAINER	2	1	1.00
T13264-1	10-17	HANGER ASSY. F/TYPE C TONG		1	36.25
T13264	10	HANGER ONLY F/TYPE C TONG		1	25.80
T13264-1-SH	10-17	SET BACK HANGER ASSY. F/TYPE C TONG		1	44.00
T13264-SH	10	SET BACK HANGER ONLY F/TYPE C TONG		1	33.55
T12586	11	BALANCING SCREW		1	2.75
T939099-596	12	BALANCING SCREW BOLT		1	2.10
T939484-8	13	BALANCING SCREW BOLT NUT		1	.40
T51402-10	14	COTTER PIN		1	.08
T12863	15	SUSPENSION RING		1	1.50
T939168-133	16	HANGER ADJUSTMENT SCREW		1	.75
T939248-8	17	HANGER JAM NUT	2		.25
T30329	18-20	HANGER BOLT ASSY.	1	1	1.50
T939097-516	18	HANGER BOLT		1	1.40
T940985-8	19	HANGER BOLT NUT		1	.25
T51402-10	20	COTTER PIN		1	.05
T11511-1	21-24.7	LONG JAW ASSY. F/TYPE C TONG		1	64.00
T11511	21	LONG JAW F/TYPE C TONG		1	63.00
T16401-2	22	1/2 X 1 1/4 X 5 TONG DIE	144	AS REQ.	.55
T17194	23	TONG DIE RETAINER PIN	24	AS REQ.	.03
T51402-6	24	COTTER PIN	36	AS REQ.	.01
T11522	25	HINGE PIN NUT	4	4	.35
T51506-8	33	GROOVE PIN F/HINGE PIN NUT	8	8	.05
T11521-1	26	THREADED HINGE PIN	4	4	2.65
T11513-5	27, 22-24	SHORT JAW ASSY. (2 3/8 — 7)		1	31.75
T11513-1	27, 22-24	SHORT JAW ASSY. (7 5/8 — 10 3/4)		1	31.75
T11933-1	28, 25, & 33	LATCH ASSY.	1	1	17.25
T9561	29	LATCH SPRING	12	2	.10
T11523	30	LEVER HINGE PIN BLOCK	1	3	2.65
T11199	31	DOWELL PIN	4	4	.05
T51402-6	32	COTTER PIN	4	4	.01
T11520-1	NP	REMOVABLE HINGE PIN	NA		2.75
T20000-SH-2	35	SAFETY HANDLE KIT (fits all AOT tongs)	3	3	3.25

NOTE: ADD -SH TO END OF LONG JAW, LATCH JAW, OR LATCH LUG JAWS FOR SAFETY HANDLES

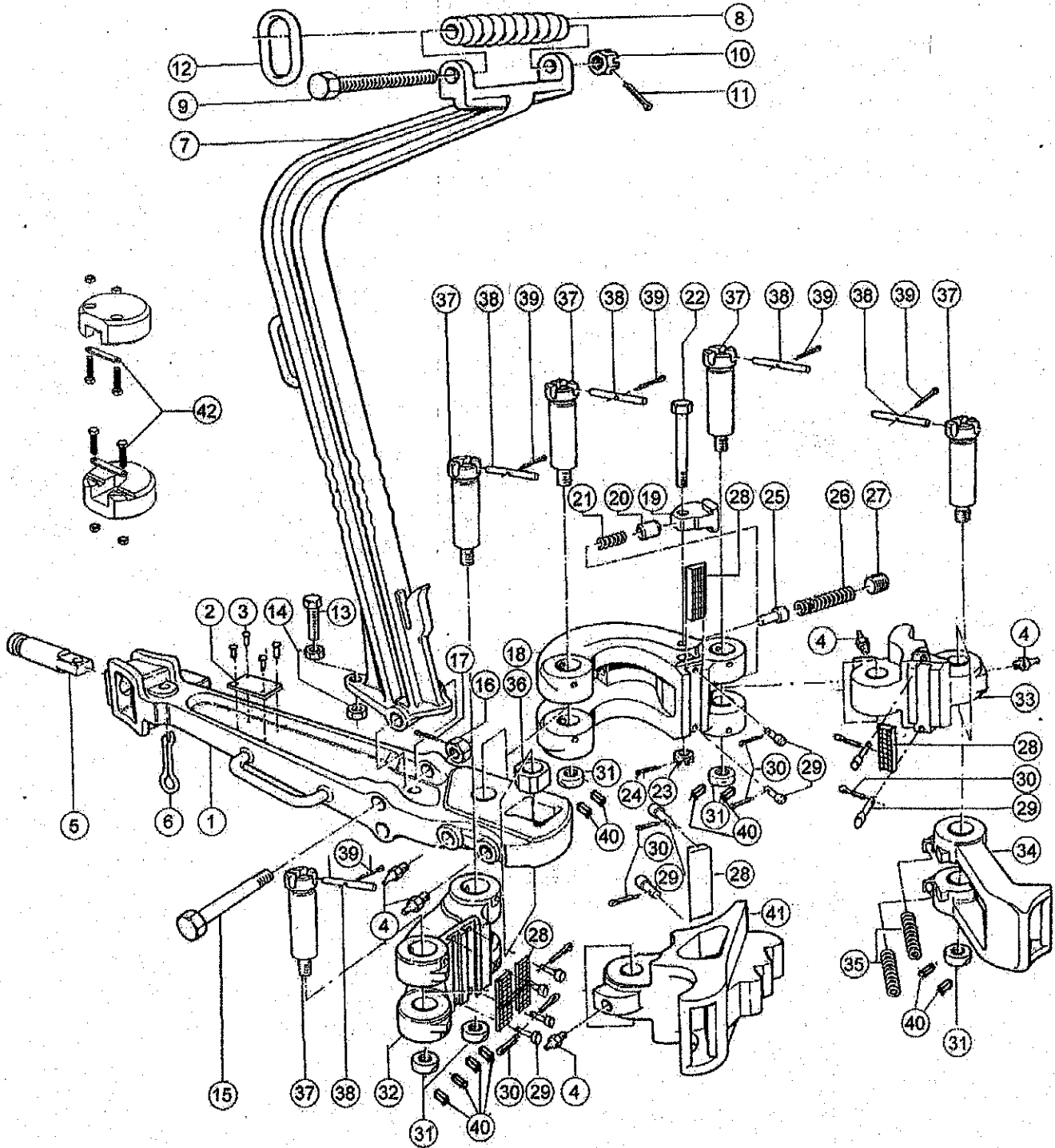
**RECOMMENDED SPARE PARTS FOR 1 YEAR



AOT TYPE "B" TONG COMPLETE

AOT #	DESCRIPTION	WT.
T30114	TYPE B TONG COMPLETE W/STANDARD LEVER LESS LUG JAWS	395.00
T30114-1	TYPE B TONG COMPLETE W/SHORT LEVER LESS LUG JAWS	386.00

NOTE: ADD —ST TO END OF TONG P/N FOR TONG WITH SAFETY HANDLES & SET-BACK HANGER



LUG JAW ASSEMBLIES FOR TYPE "B" TONG

AOT #	ITEM#	DESCRIPTION	TORQUE RATING	WT.
T11765-1	41	3 1/2 - 5 LUG JAW ASSEMBLY	55,000 ft. lbs.	30.00
T11196-3	41	4 1/4 - 6 3/4 LUG JAW ASSEMBLY	55,000 ft. lbs.	42.00
T11196-2	41	6 5/8 - 9 LUG JAW ASSEMBLY	55,000 ft. lbs.	53.00
T11297-1	41	9 - 10 3/4 LUG JAW ASSEMBLY	40,000 ft. lbs.	60.00
T13285-1	41	11 3/4 LUG JAW ASSEMBLY	40,000 ft. lbs.	61.00
T24592-3	41	12 3/4 - 13 LUG JAW ASSEMBLY	30,000 ft. lbs.	65.00
T24592-1	41	13 3/8 LUG JAW ASSEMBLY	30,000 ft. lbs.	28.00

NOTE: ADD - SH TO END OF LUG JAW P/N FOR JAWS W/SAFETY HANDLES

*Lug Jaw Assemblies include Jaw, and any required Tong Dies, Die Retainer Pins, Cotter Pins, & Grease Fittings

REPLACEMENT PARTS FOR TYPE "B" TONG

AOT #	ITEM #	DESCRIPTION	** SPARES	# REQ.	WT.
T12434-2	1-4	STANDARD LEVER ASSY. F/TYPE B TONG		1	133.00
T12434	1	STANDARD LEVER ONLY F/TYPE B TONG		1	124.00
T9568-1	1-4	SHORT LEVER ASSY. F/TYPE B TONG		1	124.00
T9568	1-4	SHORT LEVER ONLY F/TYPE B TONG		1	113.00
T2005682	2	NAME PLATE	1		.10
T53301-4-3	3	NAME PLATE SCREWS		4	.05
T53201	4	GREASE FITTING		2	.05
T9574	5	TONG LINE PIN F/TYPE B TONG	1	1	6.00
T25468	6	TONG LINE PIN RETAINER	2	1	1.00
T26782	7-14	HANGER ASSY. F/TYPE B TONG		1	56.00
T26783	7	HANGER ONLY F/TYPE B TONG		1	47.00
T26782-SH	7-14	SET BACK HANGER ASSY. F/TYPE B TONG		1	64.00
T26783-SH	7	SET BACK HANGER ONLY F/TYPE B TONG		1	55.00
T12586	8	BALANCING SCREW		1	2.75
T939099-596	9	BALANCING SCREW BOLT		1	2.10
T939484-8	10	BALANCING SCREW BOLT NUT		1	.40
T51402-14	11	COTTER PIN		1	.08
T12863	12	SUSPENSION RING		1	1.50
T939168-133	13	HANGER ADJUSTMENT SCREW		1	.75
T939248-8	14	HANGER JAM NUT		2	.25
T939097-556	15	HANGER BOLT	1	1	1.40
T940985-8	16	HANGER BOLT NUT	1	1	.25
T51402-16	17	COTTER PIN	1	1	.05
T11194-1	18-30	LONG JAW ASSY. F/TYPE B TONG		1	98.00
T11194	18	LONG JAW F/TYPE B TONG		1	95.00
T11139	19	ADJUSTABLE STOP		1	.75
T11144	20	ADJUSTABLE STOP PLUNGER		1	.15
T11192	21	ADJUSTABLE STOP SPRING		1	.15
T11191	22	ADJUSTABLE STOP BOLT		1	.55
T8150	23	ADJUSTABLE STOP BOLT NUT		1	.20
T51402-14	24	COTTER PIN		AS REQ.	.03
T11228	25	BOOSTER PLUNGER		1	.25
T11229	26	BOOSTER PLUNGER SPRING		1	.25
T940968-6	27	BOOSTER PLUNGER RETAINER PLUG		1	.25
T16402-2	28	1/2 X 1 1/4 X 5 7/8 TONG DIE	144	AS REQ.	.75
T17194	29	TONG DIE RETAINER PIN	32	AS REQ.	.03
T51402-6	30	COTTER PIN	32	AS REQ.	.01
T11142	31	HINGE PIN NUT	5	5	.35
T51506-8	40	GROOVE PIN F/HINGE PIN NUT	10	10	.05
T11197-1	32,28-30	SHORT JAW ASSY.		1	44.00
T11971	32	SHORT JAW ONLY		1	41.00
T11195-2	33, 28-30,4	LATCH JAW ASSY.		1	37.00
T11195	33	LATCH JAW ONLY		1	34.00
T11138-1	34, 31, & 40	LATCH ASSY.	1	1	28.00
T9561	35	LATCH SPRING	12	2	.10
T9572	36	LEVER HINGE PIN BLOCK	1	1	1.75
T11141	37	THREADED HINGE PIN	5	5	4.75
T11199	38	DOWELL PIN	5	5	.05
T51402-6	39	COTTER PIN	5	5	.01
T11140	NP	REMOVABLE HINGE PIN		NA	4.20
T20000-SH-2	42	SAFETY HANDLE KIT (fits all AOT tongs)	3	3	3.25

NOTE: ADD -SH TO END OF LATCH JAW ASSEMBLY, LATCH OR LATCH LUG JAWS FOR SAFETY HANDLES

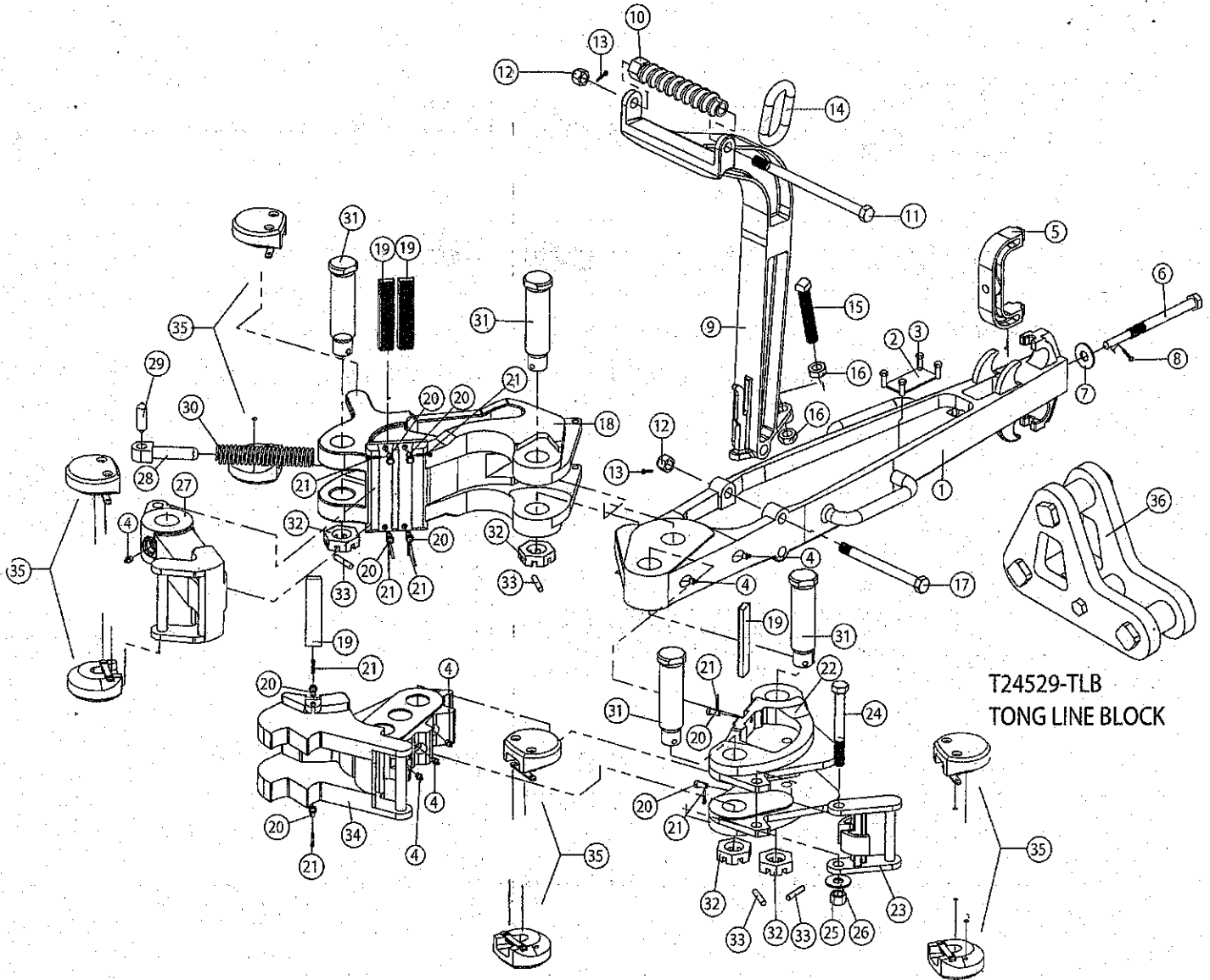
**RECOMMENDED SPARE PARTS FOR 1 YEAR



AOT TYPE "HT-65" TONG COMPLETE

AOT #	DESCRIPTION	WT.
T200540	TYPE HT-65 TONG COMPLETE LESS LUG JAWS	440.00

NOTE: ADD —ST TO END OF TONG P/N FOR TONG WITH SAFETY HANDLES & SET-BACK HANGER



T24529-TLB
TONG LINE BLOCK



HINGE & LUG JAW ASSEMBLIES FOR TYPE "HT-65" TONG

AOT #	ITEM #	DESCRIPTION	TORQUE RATING	WT.
T200546-1	34	3 1/2 - 8 1/4 LUG JAW ASSEMBLY	65,000 ft. lbs.	82.00
T200547-1	34	8 - 11 1/4 LUG JAW ASSEMBLY	65,000 ft. lbs.	97.00
T200548	34	11 3/4 - 14 3/8 LUG JAW ASSEMBLY	40,000 ft. lbs.	71.00
T200549	34	16 - 17 LUG JAW ASSEMBLY	40,000 ft. lbs.	83.00
T200545-1	NP	11 3/4 - 17 HINGEJAW ASSEMBLY	40,000 ft. lbs.	56.00

NOTE: ADD - SH TO END OF LUG JAW P/N FOR JAWS W/SAFETY HANDLES

*Lug & Hinge Jaw Assemblies include Jaw, and any required Tong Dies, Die Retainer Pins, Cotter Pins, & Grease Fittings

** Hinge Jaw Assembly required for sizes greater than 11 1/4

REPLACEMENT PARTS FOR TYPE "HT-65" TONG

AOT #	ITEM #	DESCRIPTION	** SPARES	# REQ.	WT.
T200541-1	1-8	LEVER ASSY. F/TYPE HT-65 TONG		1	139.00
T200541	1	STANDARD LEVER ONLY F/TYPE HT-65 TONG		1	134.00
T200551	2	NAME PLATE		1	.10
T53301-4-3	3	NAME PLATE SCREWS		4	.05
T53201	4	GREASE FITTING		2	.05
T24529	5	TONG LINE RETAINER	1	1	3.65
T24249	6	TONG LINE RETAINER BOLT	1	1	1.08
T50809-N-C	7	WASHER F/RETAINER BOLT	1	1	.05
T51402-8	8	COTTER PIN	1	1	.04
T200668-2	9-16	HANGER ASSY. F/TYPE HT-65 TONG		1	56.00
T200668	9	HANGER ONLY F/TYPE HT-65 TONG		1	47.00
T200668-2-SH	9-16	SET BACK HANGER ASSY. F/TYPE HT-65 TONG		1	64.00
T200668-SH	9	HANGER ONLY F/TYPE HT-65 TONG		1	55.00
T12586	10	BALANCING SCREW		1	2.75
T939099-596	11	BALANCING SCREW BOLT		1	2.10
T50512-C	12	BALANCING SCREW BOLT NUT		1	.40
T51402-16	13	COTTER PIN		1	.08
T12863	14	SUSPENSION RING		1	1.50
T939168-133	15	HANGER ADJUSTMENT SCREW		1	.75
T50314-C	16	HANGER JAM NUT		2	.25
T939099-556	17	HANGER BOLT	1	1	1.40
T50512-C	12	HANGER BOLT NUT	1	1	.25
T51402-16	13	COTTER PIN	1	1	.05
T200542-1	18-21	LONG JAW ASSY. F/TYPE HT-65 TONG		1	118.00
T200542	18	LONG JAW F/TYPE HT-65 TONG		1	111.00
T16402-2	19	1/2 X 1 1/4 X 5 7/8 TONG DIE	144	AS REQ.	.75
T17194	20	TONG DIE RETAINER PIN	24	AS REQ.	.03
T51402-6	21	COTTER PIN	36	AS REQ.	.01
T200543-1	22-26, 19-21	SHORT JAW ASSY. F/TYPE HT-65 TONG		1	51.00
T200543	22	SHORT JAW ONLY F/TYPE HT-65 TONG		1	47.00
T25864	23	SHORT HANDLE JAW		1	2.75
T50012-52-C8	24	BOLT		1	.75
T50212-C	25	NUT		1	.35
T50912-C	26	LOCKWASHER		1	.04
T200544-1	27-29, 4	LATCH ASSY.	1	1	36.00
T200544	27	LATCH		1	34.00
T24526	28	LATCH SPING PLUNGER		1	1.75
T24530	29	PLUNGER PIN	1		.25
T24525	30	LATCH SPRING	12	1	.50
T200550	31	HINGE PIN	4.5	4.5	5.00
T24528	32	HINGE PIN NUT	4.5	4.5	.75
T51405-20	33	COTTER PIN	4.5	4.5	.03
T2000-SH-2	35	SAFETY HANDLE KIT (fits all AOT tongs)	4	4	3.25
T24529-TLB-MU	36	TONG LINE BLOCK, MAKE-UP (Right Hand)		A/R	31.00
T24529-TLB-BO	36	TONG LINE BLOCK, BREAK OUT (Left Hand)		A/R	31.00

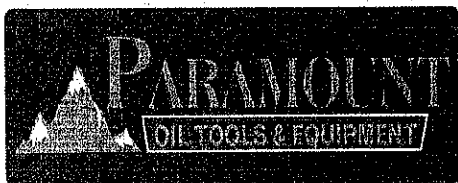
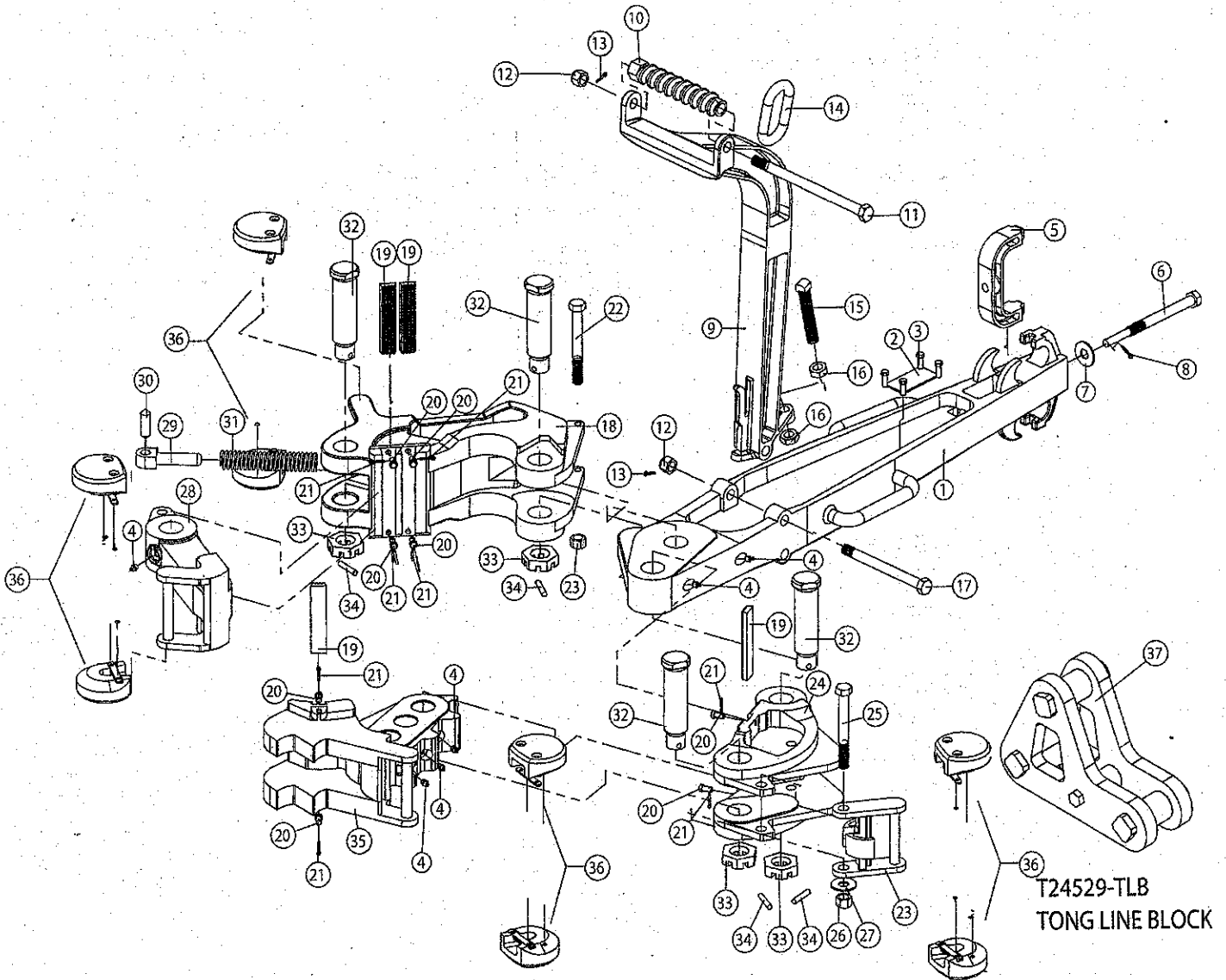
*RECOMMENDED SPARE PARTS FOR 1 YEAR



AOT TYPE "HT-100" TONG COMPLETE

AOT #	DESCRIPTION	WT.
T200071	TYPE HT-100 TONG COMPLETE LESS LUG JAWS	533.00

NOTE: ADD —ST TO END OF TONG P/N FOR TONG WITH SAFETY HANDLES & SET-BACK HANGER



HINGE & LUG JAW ASSEMBLIES FOR TYPE "HT-100" TONG

AOT #	ITEM#	DESCRIPTION	TORQUE RATING	WT.
T200663-1	35	4 - 8 1/2 LUG JAW ASSEMBLY	100,000 ft. lbs.	135.00
T200664	35	8 1/2 — 12 LUG JAW ASSEMBLY	100,000 ft. lbs.	102.00
T200665	35	12 — 15 LUG JAW ASSEMBLY	75,000 ft. lbs.	140.00
T200666	35	15 3/4 LUG JAW ASSEMBLY	100,000 ft. lbs.	162.00
T200667	35	16 — 17 LUG JAW ASSEMBLY	60,000 ft. lbs.	140.00
T200662-1	NP	8 1/2 — 17 HINGEJAW ASSEMBLY	100,000 ft. lbs.	112.00

NOTE: ADD - SH TO END OF LUG JAW PIN FOR JAWS W/SAFETY HANDLES

*Lug & Hinge Jaw Assemblies include Jaw, and any required Tong Dies, Die Retainer Pins, Cotter Pins, & Grease Fittings

** Hinge Jaw Assembly required for sizes greater than 8 1/2

REPLACEMENT PARTS FOR TYPE "HT-100" TONG

AOT #	ITEM #	DESCRIPTION	** SPARES	# REQ.	WT.
T200661-1	1-8	LEVER ASSY. F/TYPE HT-100 TONG		1	191.00
T200661	1	STANDARD LEVER ONLY F/TYPE HT-100 TONG		1	186.00
T200669	2	NAME PLATE		1	.10
T53301-4-3	3	NAME PLATE SCREWS		4	.05
T53201	4	GREASE FITTING		2	.05
T24529	5	TONG LINE RETAINER	1	1	3.65
T24249	6	TONG LINE RETAINER BOLT	1	1	1.08
T50809-N-C	7	WASHER F/RETAINER BOLT	1	1	.05
T51402-8	8	COTTER PIN	1	1	.04
T200668-2	9-16	HANGER ASSY. F/ HT-100 & HT-65 TONG		1	56.00
T200668	9	HANGER ONLY F/ HT-100 & HT-65 TONG		1	47.00
T200668-2-SH	9-16	SET BACK HANGER ASSY. F/ HT-100 & HT-65 TONG		1	64.00
T200668-SH	9	SET BACK HANGER ONLY F/ HT-100 & HT-65 TONG		1	55.00
T12586	10	BALANCING SCREW		1	2.75
T939099-596	11	BALANCING SCREW BOLT		1	2.10
T50512-C	12	BALANCING SCREW BOLT NUT		1	.40
T51402-16	13	COTTER PIN		1	.08
T12863	14	SUSPENSION RING		1	1.50
T939168-133	15	HANGER ADJUSTMENT SCREW		1	.75
T50314-C	16	HANGER JAM NUT		2	.25
T939099-556	17	HANGER BOLT	1	1	1.40
T50512-C	12	HANGER BOLT NUT	1	1	.25
T51402-16	13	COTTER PIN	1	1	.05
T200072-1	18-23	LONG JAW ASSY. F/TYPE HT-100 TONG		1	140.00
T200072	18	LONG JAW F/TYPE HT-100 TONG		1	128.00
T16401-2	19	1/2 X 1 1/4 X 5 TONG DIE	144	AS REQ.	.75
T17194	20	TONG DIE RETAINER PIN	24	AS REQ.	.03
T51402-6	21	COTTER PIN	36	AS REQ.	.01
T50012-52-C8	22	BOLT F/LONG JAW		1	1.75
T50212-C	23	NUT		1	.30
T200074-1	24-27, 19-21	SHORT JAW ASSY. F/TYPE HT-100 TONG		1	87.00
T200074	24	SHORT JAW ONLY F/TYPE HT-100 TONG		1	77.00
T939107-516	25	BOLT		1	.75
T50214-C	26	NUT		1	.35
T50912-C	27	LOCKWASHER		1	.04
T200073-1	28-30,4	LATCH ASSY.	1	1	47.00
T200073	28	LATCH		1	43.00
T24526	29	LATCH SPRING PLUNGER		1	1.75
T24530	30	PLUNGER PIN		1	.25
T24525	31	LATCH SPRING	12	1	.50
T200204	32	HINGE PIN	4.5	4.5	5.00
T24528	33	HINGE PIN NUT	4.5	4.5	.75
T51405-20	34	COTTER PIN	4.5	4.5	.03
T20000-SH-2	36	SAFETY HANDLE KIT (fits all AOT tongs)	3	3	3.25
T24529-TLB-MU	37	TONG LINE BLOCK, MAKE-UP (Right Hand)		A/R	31.00
T24529-TLB-BO	37	TONG LINE BLOCK, BREAK OUT (Left Hand)		A/R	31.00

**RECOMMENDED SPARE PARTS FOR 1 YEAR

